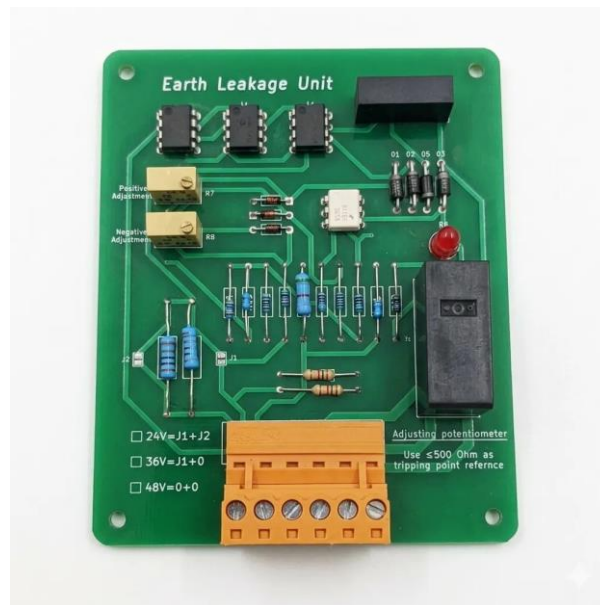


[01-10-0005] ELU - Earth Leakage Unit 24-48VDC



Voltage Selection

If the required voltage is below 48V, the jumpers 1 and 2 needs to be soldered according to the table on the board to achieve the 36 and 24 operation voltage.

Earth Leakage Unit (ELU) Testing

With the unit powered with the correct voltage, using a 450-500 Ohm $\frac{1}{4}$ W resistor temporarily bridge it between the frame terminal and positive terminal of the ELU. The relay **SHOULD** switch while resistor is connected and switch back again when the resistor is removed. Repeat the process in between the frame terminal and negative terminal of the ELU. The relay **SHOULD** again switch while resistor is connected and switch back again when the resistor is removed.